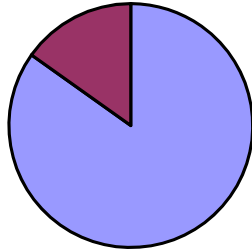


Towns County Health Department 2015

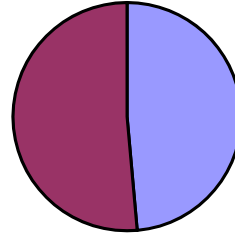
Clinic Services

2014 County Population	11,098	Percent of Population
Unique Clients Served in 2015	1,683	15% (1 Year)
Unique Clients Served in 2011-2015	5,706	51% (5 Years)

Pop. Served in 1 Year



Pop. Served in 5 Years

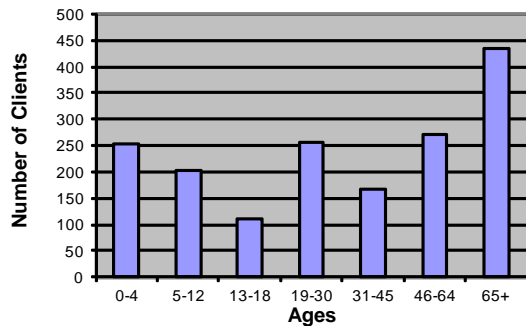


Total Visits	2,759
Total Services	10,765

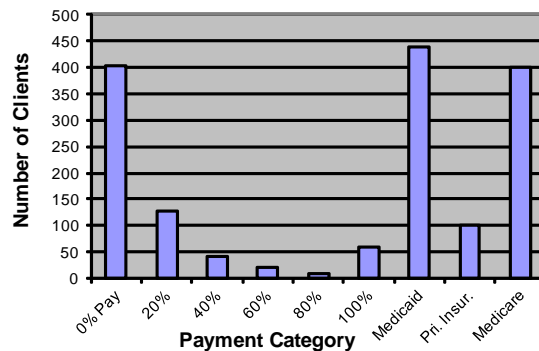
Immunizations	3630	34%			
PPD, Lab, Preg. Tests	2329	22%	STD	69	1%
WIC	2236	21%	Breast & Cervical Cancer	52	0%
Family Planning	1476	14%	Dental	46	0%
Child Health	452	4%	Maternal Health	42	0%
Adult Health	433	4%	TB	0	0%

Total Clients	1,683
---------------	-------

Clients by Age



Payment for Service



Environmental Health Services

Total Services	1450
On-Site Sewage Management Services*	347
Number of Permitted Establishments**	79
Plan and Subdivision Reviews	12
Complaint Investigations	13
Water Samples	19
Rabies Investigations	15

* Permits, Inspections, and Site Evaluations

** Food Services, Tourist Accommodations, & Swimming Pools undergoing permitting and inspections