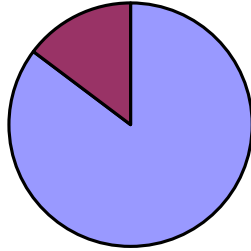


Habersham County Health Department 2016

Clinic Services

2015 County Population	43,996	Percent of Population
Unique Clients Served in 2016	6,486	15% (1 Year)
Unique Clients Served in 2012-2016	17,906	41% (5 Years)

Pop. Served in 1 Year



Pop. Served in 5 Years

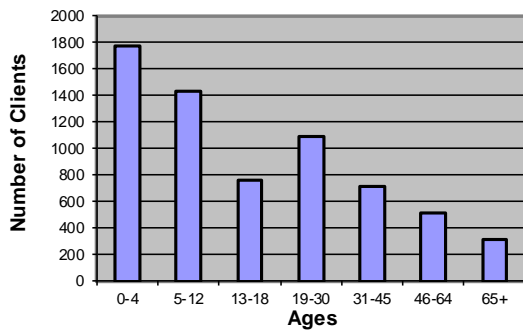


Total Visits	13,461
Total Services	46,481

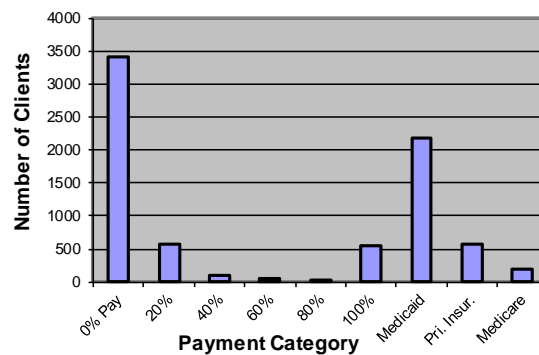
WIC	16979	37%		TB	656	1%
Immunizations	12043	26%		Child Health	620	1%
Dental	7685	17%		STD	470	1%
Family Planning	4198	9%	Breast & Cervical Cancer	283	1%	
PPD, Lab, Preg. Tests	2620	6%	Maternal Health	144	0%	
Adult Health	783	2%				

Total Clients	6,486
---------------	-------

Clients by Age



Payment for Service



Environmental Health Services

Total Services	3039
On-Site Sewage Management Services*	545
Number of Permitted Establishments**	137
Plan and Subdivision Reviews	19
Complaint Investigations	44
Water Samples	36
Rabies Investigations	103

* Permits, Inspections, and Site Evaluations

** Food Service, Tourist, Body Art, & Pools undergoing permitting and inspections